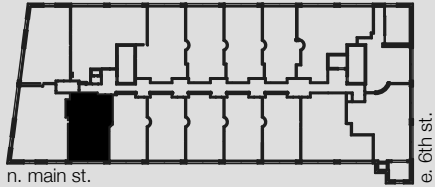


WINSTON FACTORY LOFTS

UNIT 308



Building A
675 North Main Street
Winston-Salem, NC

2 BED/2.5 BATH

1,288 SQ FT

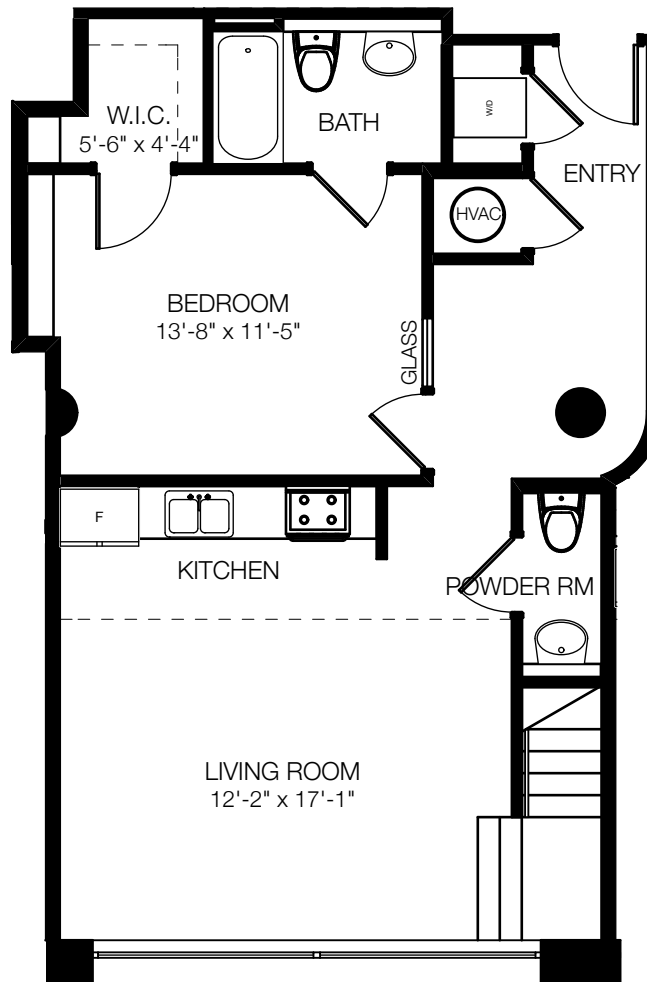
CEILING HEIGHT: 17'-0"
@ LIVING AREAS

CONCRETE & BAMBOO
FLOORING

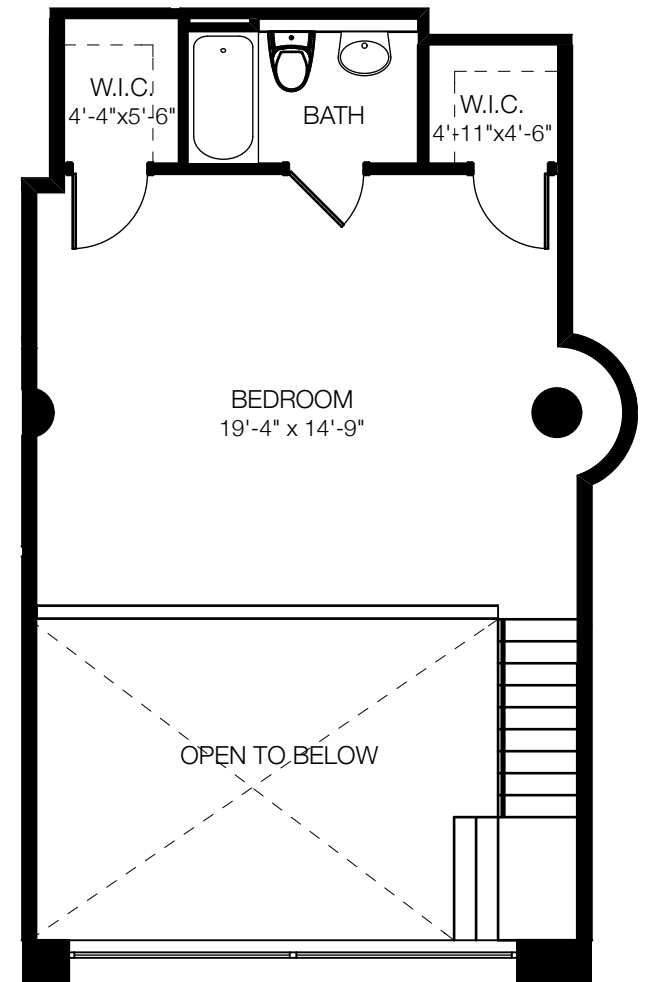
TWO-STORY UNIT

WASHER/DRYER IN UNIT

888.MY.336.LOFT [o]
336.464.2331 [f]
www.winstonfactorylofts.com



lower level



upper level

Square footages, where indicated on plan, are approximate. Layouts of interiors are for general reference only, and are not intended to depict precisely the actual as-built conditions. Drawings are not to scale and are subject to change.