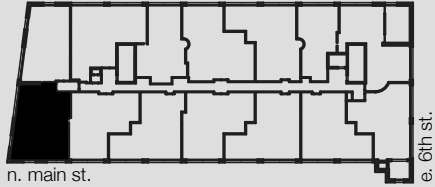


# UNIT 607



Building A  
675 North Main Street  
Winston-Salem, NC

2 BED/2 BATH

1,138 SQ FT

CEILING HEIGHT: 17'-0"

ORIGINAL HARDWOOD  
FLOORS

GREAT VIEWS OF  
DOWNTOWN SKYLINE

MOUNTAIN VIEWS

CORNER UNITS WITH  
GLASS ON TWO SIDES

WASHER/DRYER IN UNIT

Square footages, where indicated on plan, are approximate. Layouts of interiors are for general reference only, and are not intended to depict precisely the actual as-built conditions. Drawings are not to scale and are subject to change.

# WINSTON FACTORY LOFTS

888.MY.336.LOFT [o]

336.464.2331 [f]

[www.winstonfactorylofts.com](http://www.winstonfactorylofts.com)

