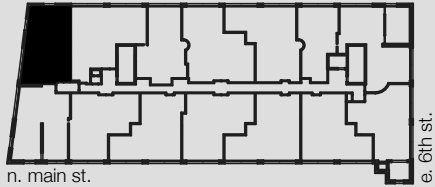


UNIT 608

WINSTON FACTORY LOFTS



Building A
675 North Main Street
Winston-Salem, NC

2 BED/2 BATH

972 SQ FT

CEILING HEIGHT: 17'-0"

ORIGINAL HARDWOOD
FLOORS

CORNER UNIT WITH
GLASS ON TWO SIDES

MOUNTAIN VIEWS

WASHER/DRYER IN UNIT

Square footages, where indicated on plan, are approximate. Layouts of interiors are for general reference only, and are not intended to depict precisely the actual as-built conditions. Drawings are not to scale and are subject to change.

888.MY.336.LOFT [o]
336.464.2331 [f]
www.winstonfactorylofts.com

