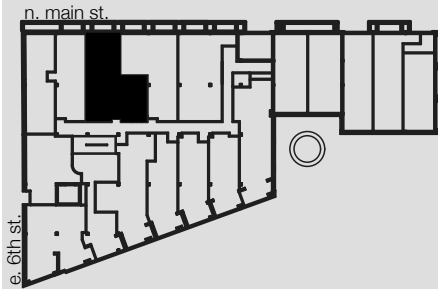


# UNIT 104, 204, 304, 404, 504

# WINSTON FACTORY LOFTS



Building B  
101 East 6th Street  
Winston-Salem, NC

2 BED/2 BATH

956 SQ FT

CEILING HEIGHT:  
1ST-4TH 12'-4", 5TH 10'-5"

CONCRETE (104), WOOD  
(204-504) & TILE FLOORING

GRANITE COUNTERTOPS

STAINLESS STEEL  
APPLIANCES

WASHER/DRYER IN UNIT

Square footages, where indicated on plan, are approximate. Layouts of interiors are for general reference only, and are not intended to depict precisely the actual as-built conditions. Drawings are not to scale and are subject to change.

336.703.5050 [o]  
336.703.5010 [f]  
[www.winstonfactorylofts.com](http://www.winstonfactorylofts.com)

