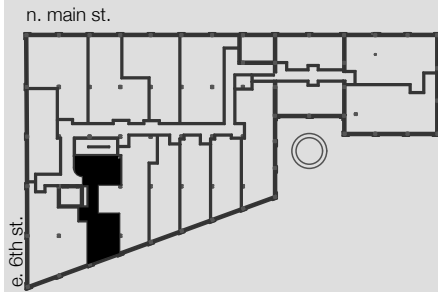


WINSTON FACTORY LOFTS

UNIT 316



Building B
101 East 6th Street
Winston-Salem, NC

1 BED/1 BATH

684 SQ FT

ACCESSIBLE UNIT

CEILING HEIGHT: 12'-4"

WOOD & TILE FLOORING

GRANITE COUNTERTOPS

STAINLESS STEEL
APPLIANCES

WASHER/DRYER IN UNIT

Square footages, where indicated on plan, are approximate. Layouts of interiors are for general reference only, and are not intended to depict precisely the actual as-built conditions. Drawings are not to scale and are subject to change.

336.703.5050 [o]
336.703.5010 [f]
www.winstonfactorylofts.com

