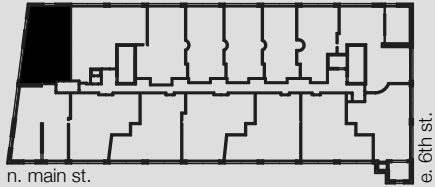


# UNIT 208, 408, 508

# WINSTON FACTORY LOFTS



Building A  
675 North Main Street  
Winston-Salem, NC

2 BED/2.5 BATH

972 SQ FT

CEILING HEIGHT: 13'-0"  
@ LIVING AREAS

2ND: CONCRETE FLOORING  
4TH/5TH: BAMBOO FLOORING

CORNER UNIT WITH GLASS  
ON TWO SIDES

MOUNTAIN VIEWS ON  
4TH & 5TH FLOOR

OVERLOOKS THE POOL

WASHER/DRYER IN UNIT

Square footages, where indicated on plan, are approximate. Layouts of interiors are for general reference only, and are not intended to depict precisely the actual as-built conditions. Drawings are not to scale and are subject to change.

888.MY.336.LOFT [o]  
336.464.2331 [f]  
www.winstonfactorylofts.com

