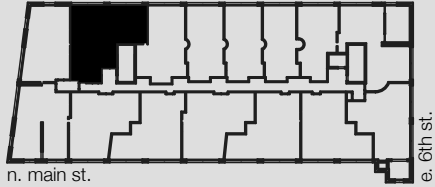


# UNIT 209, 409, 509

# WINSTON FACTORY LOFTS



Building A  
675 North Main Street  
Winston-Salem, NC

3 BED/2.5 BATH

1,183 SQ FT

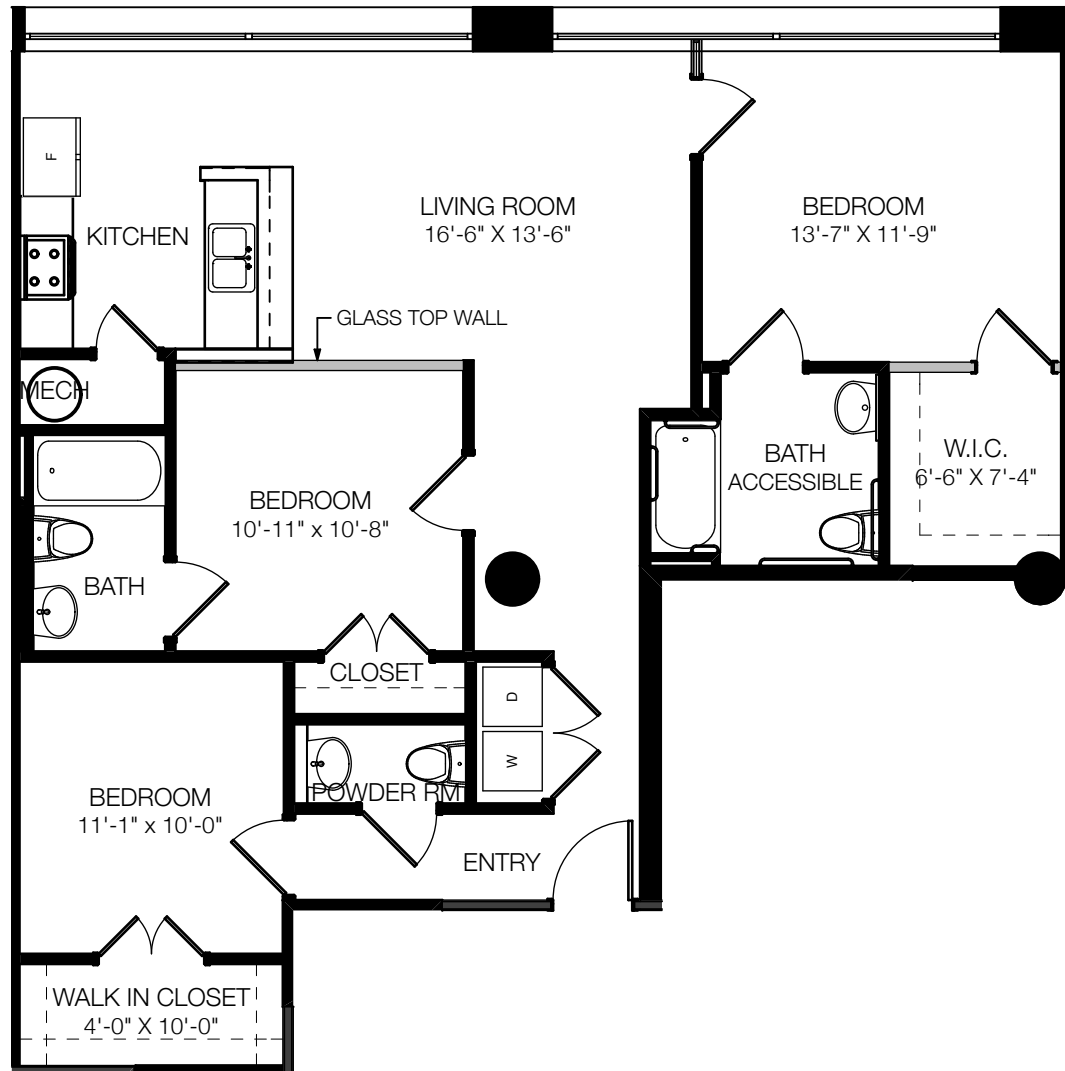
CEILING HEIGHT: 13'-0"  
@ LIVING AREAS

2ND: CONCRETE FLOORING  
4TH/5TH: BAMBOO FLOORING

ACCESSIBLE UNIT

WASHER/DRYER IN UNIT

888.MY.336.LOFT [o]  
336.464.2331 [f]  
www.winstonfactorylofts.com



Square footages, where indicated on plan, are approximate. Layouts of interiors are for general reference only, and are not intended to depict precisely the actual as-built conditions. Drawings are not to scale and are subject to change.