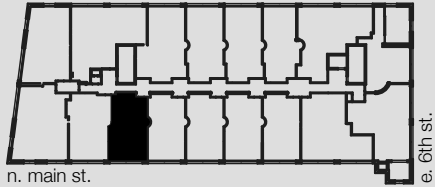


WINSTON FACTORY LOFTS

UNIT 307



Building A
675 North Main Street
Winston-Salem, NC

2 BED/2.5 BATH

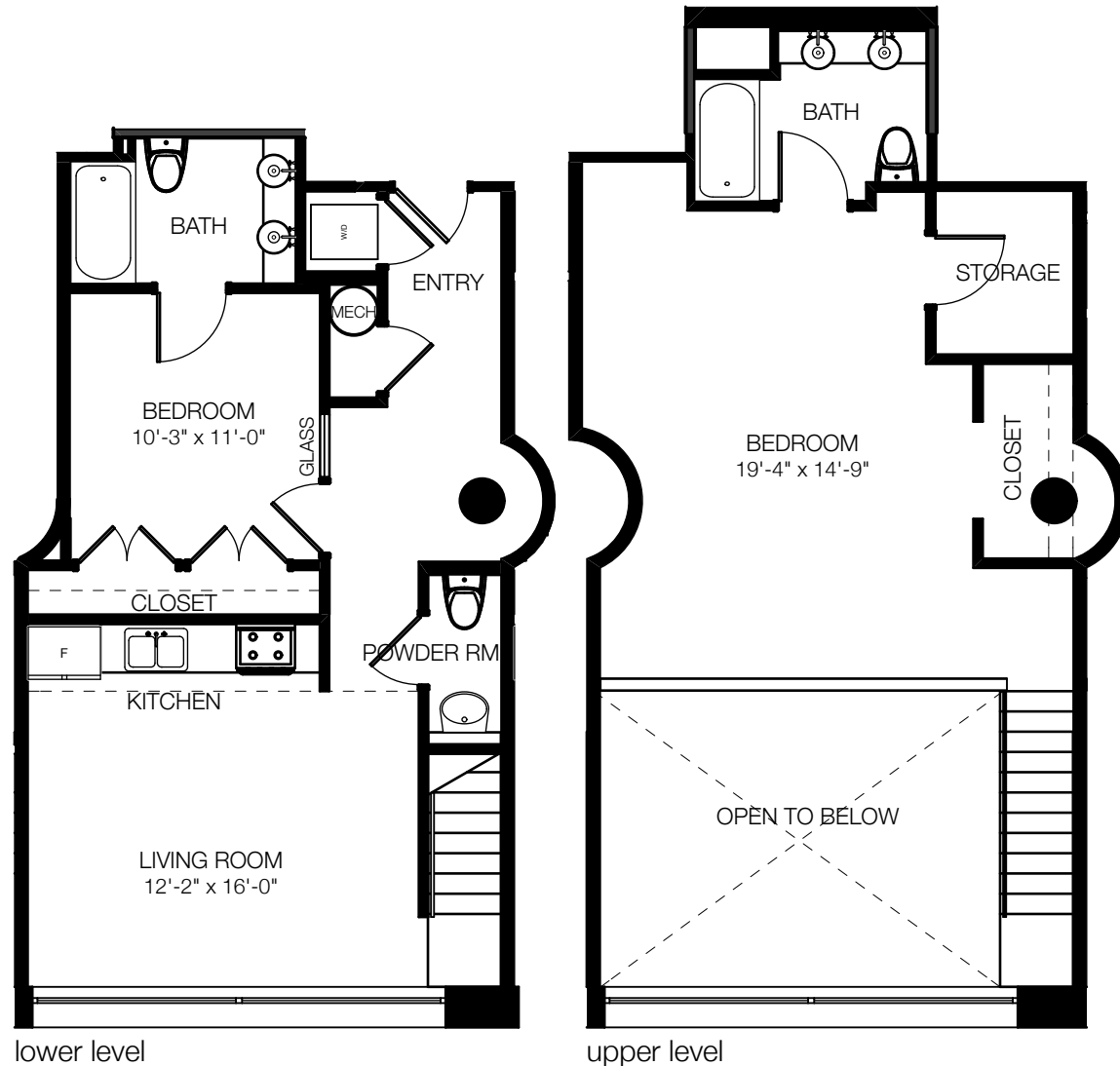
1,155 SQ FT

CEILING HEIGHT: 17'-0"
@ LIVING AREAS

CONCRETE & BAMBOO
FLOORING

TWO-STORY UNIT

WASHER/DRYER IN UNIT



888.MY.336.LOFT [o]
336.464.2331 [f]
www.winstonfactorylofts.com

Square footages, where indicated on plan, are approximate. Layouts of interiors are for general reference only, and are not intended to depict precisely the actual as-built conditions. Drawings are not to scale and are subject to change.