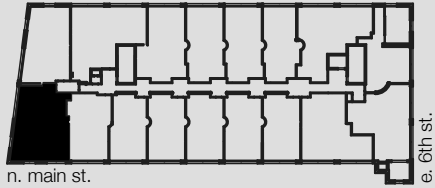


UNIT 309

WINSTON FACTORY LOFTS



Building A
675 North Main Street
Winston-Salem, NC

3 BED/2.5 BATH

1,455 SQ FT

CEILING HEIGHT: 17'-0"
@ LIVING AREAS

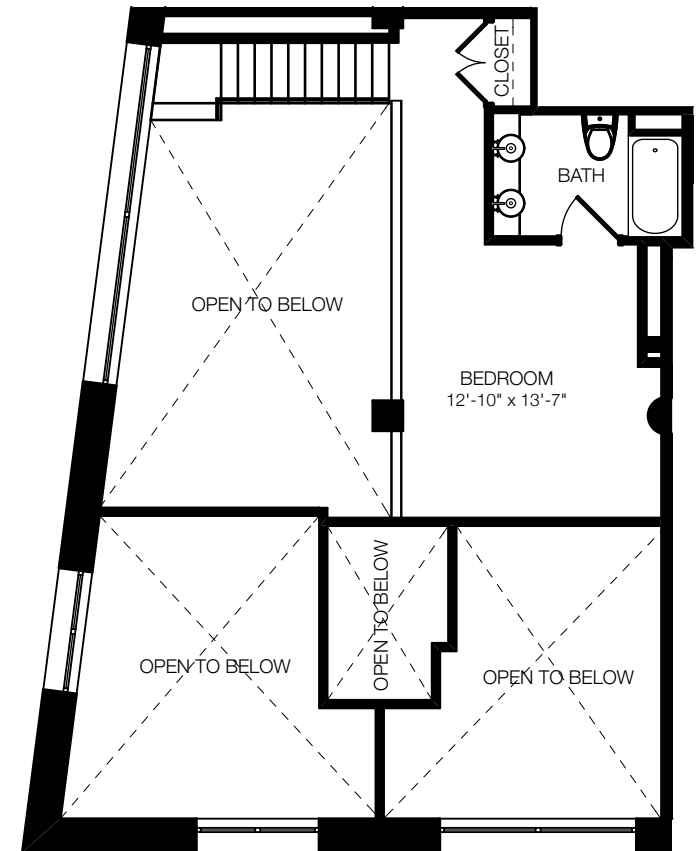
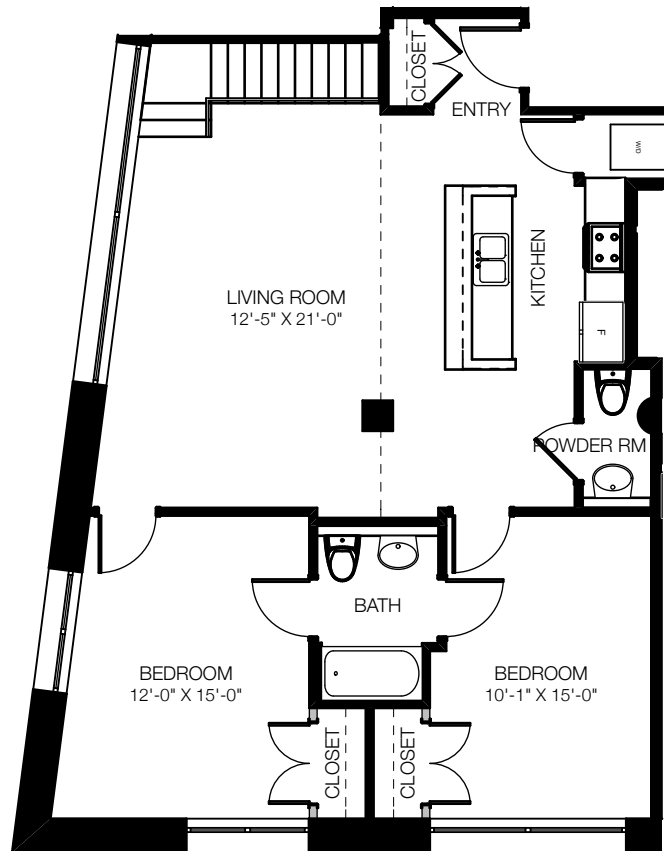
CONCRETE & BAMBOO
FLOORING

TWO-STORY UNIT

CORNER UNIT WITH
GLASS ON TWO SIDES

WASHER/DRYER IN UNIT

888.MY.336.LOFT [o]
336.464.2331 [f]
www.winstonfactorylofts.com



Square footages, where indicated on plan, are approximate. Layouts of interiors are for general reference only, and are not intended to depict precisely the actual as-built conditions. Drawings are not to scale and are subject to change.