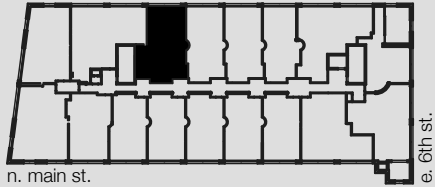


UNIT 312

WINSTON FACTORY LOFTS



Building A
675 North Main Street
Winston-Salem, NC

2 BED/2.5 BATH + OFFICE

1,409 SQ FT

CEILING HEIGHT: 17'-0"
@ LIVING AREAS

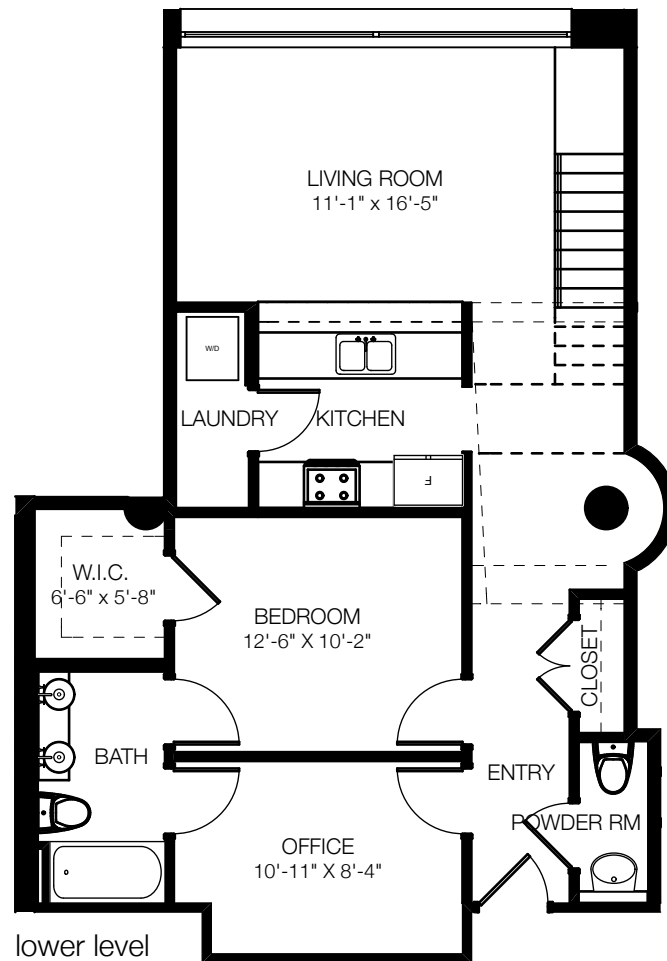
CONCRETE & BAMBOO
FLOORING

TWO-STORY UNIT

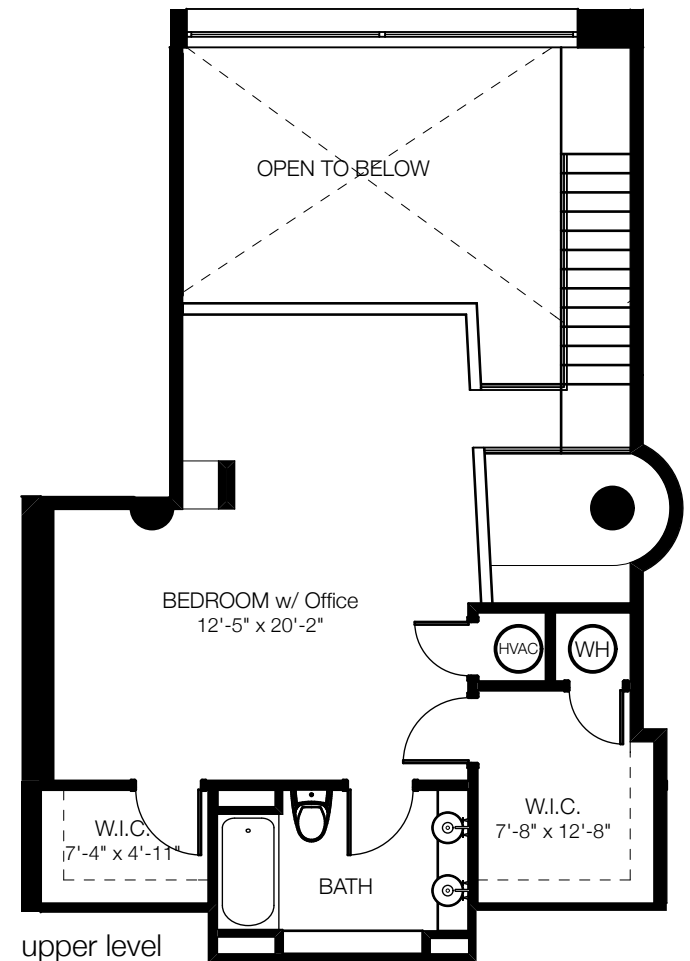
OVERLOOKS THE POOL

WASHER/DRYER IN UNIT

888.MY.336.LOFT [o]
336.464.2331 [f]
www.winstonfactorylofts.com



lower level



upper level

Square footages, where indicated on plan, are approximate. Layouts of interiors are for general reference only, and are not intended to depict precisely the actual as-built conditions. Drawings are not to scale and are subject to change.