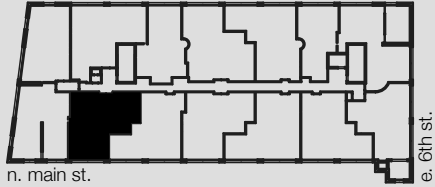


UNIT 606



Building A
675 North Main Street
Winston-Salem, NC

2 BED/2 BATH

1,066 SQ FT

CEILING HEIGHT: 17'-0"

ORIGINAL HARDWOOD FLOORS

GREAT VIEWS OF DOWNTOWN SKYLINE

MOUNTAIN VIEWS

WASHER/DRYER IN UNIT

Square footages, where indicated on plan, are approximate. Layouts of interiors are for general reference only, and are not intended to depict precisely the actual as-built conditions. Drawings are not to scale and are subject to change.

WINSTON FACTORY LOFTS

888.MY.336.LOFT [o]
336.464.2331 [f]
www.winstonfactorylofts.com

