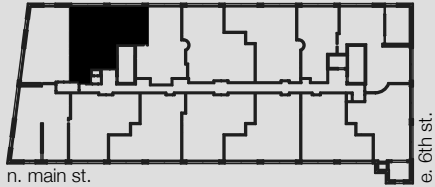


UNIT 609



Building A
675 North Main Street
Winston-Salem, NC

3 BED/2.5 BATH

1,178 SQ FT

CEILING HEIGHT: 17'-0"

ORIGINAL HARDWOOD
FLOORS

ACCESSIBLE UNIT

OVERLOOKS THE POOL

WASHER/DRYER IN UNIT

Square footages, where indicated on plan, are approximate. Layouts of interiors are for general reference only, and are not intended to depict precisely the actual as-built conditions. Drawings are not to scale and are subject to change.

WINSTON FACTORY LOFTS

888.MY.336.LOFT [o]

336.464.2331 [f]

www.winstonfactorylofts.com

