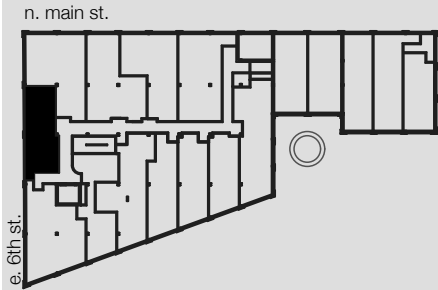


# UNIT 202, 302, 402, 502

# WINSTON FACTORY LOFTS



Building B  
101 East 6th Street  
Winston-Salem, NC

1 BED/1 BATH

624 SQ FT

CEILING HEIGHT: 2ND-4TH  
12'-4", 5TH 10'-5"

WOOD & TILE FLOORING

GRANITE COUNTERTOPS

STAINLESS STEEL  
APPLIANCES

WASHER/DRYER IN UNIT

Square footages, where indicated on plan, are approximate. Layouts of interiors are for general reference only, and are not intended to depict precisely the actual as-built conditions. Drawings are not to scale and are subject to change.

336.703.5050 [o]  
336.703.5010 [f]  
[www.winstonfactorylofts.com](http://www.winstonfactorylofts.com)

