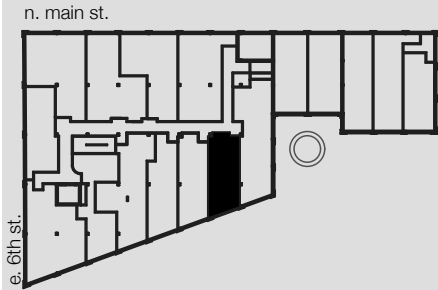


UNIT 208, 312, 409, 510

WINSTON FACTORY LOFTS



Building B
101 East 6th Street
Winston-Salem, NC

1 BED/1 BATH

548 SQ FT

CEILING HEIGHT: 2ND-4TH
12'-4", 5TH 10'-5"

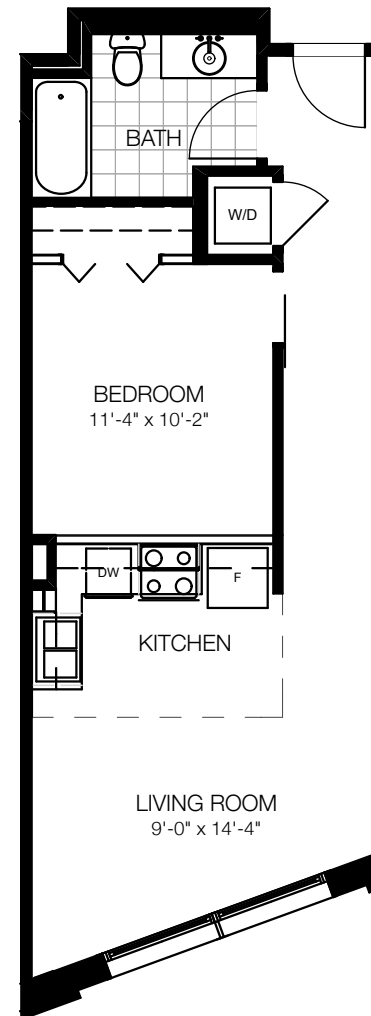
WOOD & TILE FLOORING

GRANITE COUNTERTOPS

STAINLESS STEEL
APPLIANCES

WASHER/DRYER IN UNIT

336.703.5050 [o]
336.703.5010 [f]
www.winstonfactorylofts.com



Square footages, where indicated on plan, are approximate. Layouts of interiors are for general reference only, and are not intended to depict precisely the actual as-built conditions. Drawings are not to scale and are subject to change.