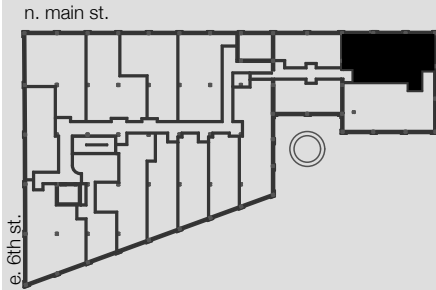


WINSTON FACTORY LOFTS

UNIT 308



Building B
101 East 6th Street
Winston-Salem, NC

3 BED/2 BATH

1136 SQ FT

CEILING HEIGHT: 12'-7"
19'-4" AT LIVING ROOM

CONCRETE & WOOD
FLOORING

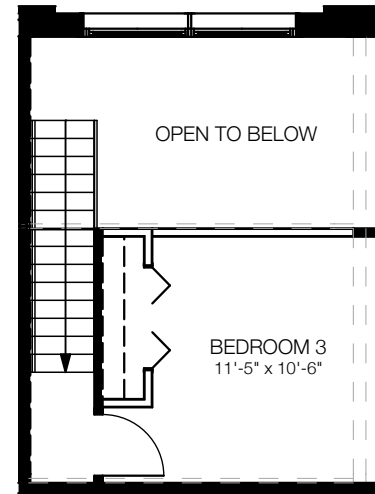
GRANITE COUNTERTOPS

STAINLESS STEEL
APPLIANCES

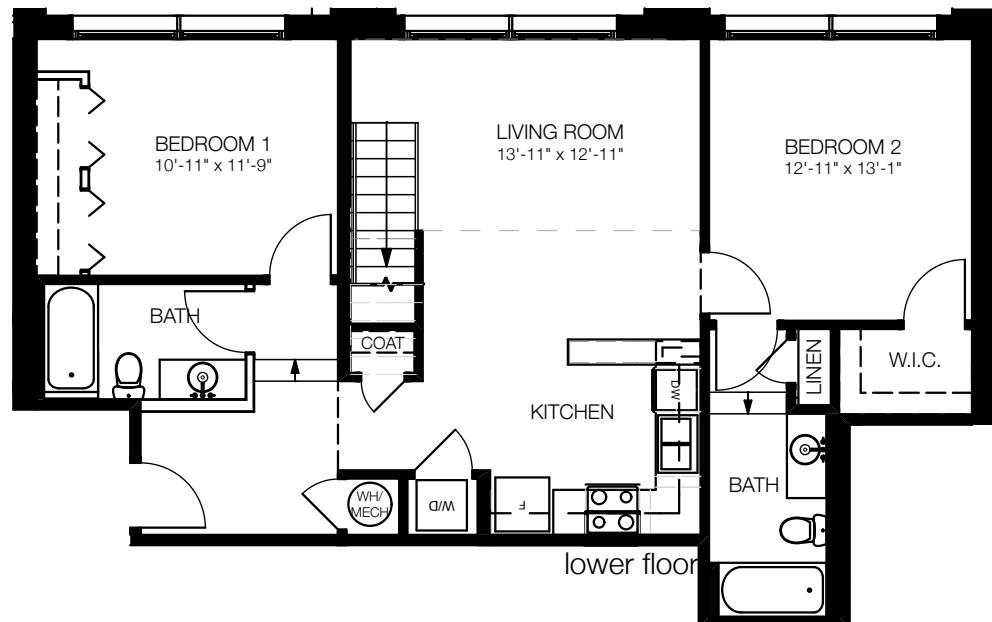
WASHER/DRYER IN UNIT

Square footages, where indicated on plan, are approximate. Layouts of interiors are for general reference only, and are not intended to depict precisely the actual as-built conditions. Drawings are not to scale and are subject to change.

336.703.5050 [o]
336.703.5010 [f]
www.winstonfactorylofts.com



upper floor



lower floor