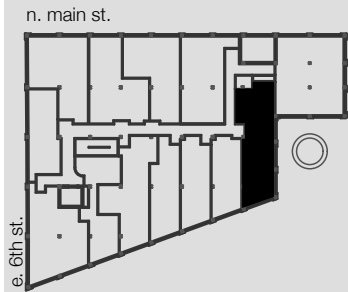


WINSTON FACTORY LOFTS

UNIT 608



Building B
101 East 6th Street
Winston-Salem, NC

2 BED/2 BATH

929 SQ FT

CEILING HEIGHT: 11'-4"

WOOD & TILE FLOORING

GRANITE COUNTERTOPS

STAINLESS STEEL
APPLIANCES

WASHER/DRYER IN UNIT

Square footages, where indicated on plan, are approximate. Layouts of interiors are for general reference only, and are not intended to depict precisely the actual as-built conditions. Drawings are not to scale and are subject to change.

336.703.5050 [o]
336.703.5010 [f]
www.winstonfactorylofts.com

